



THE ATHENÆUM  
BURY ST EDMUNDS

Make your next event  
one to talk about

Weddings · Conferences & Exhibitions · Celebrations & Events

[www.the-athenaeum.com](http://www.the-athenaeum.com) · [enquiries@the-athenaeum.com](mailto:enquiries@the-athenaeum.com)



## Events at The Athenaeum

“There is only one thing in the world worse than being talked about, and that is not being talked about.”

- Oscar Wilde, *The Picture of Dorian Gray*, 1891 -



Make your next event one to talk about



## **A historical venue, rich in elegance and grandeur for business events, weddings and parties.**



**Designed by Frederick Sands, the impressive Georgian Grade I listed Assembly Rooms were originally founded as elegant public rooms in the heart of fashionable eighteenth century Bury St Edmunds where members of polite society relaxed, played cards, danced and took tea.**

The Assembly Rooms were developed and reopened in 1854 as The Athenaeum and quickly became the centre of Bury society and the place to be seen and entertained. In its heyday The Athenaeum played host to society balls, readings of famous literary works and lectures by some of the nation's leading writers, playwrights and social critics including Charles Dickens, Oscar Wilde, Charles Kingsley and William Thackeray. Charles Dickens gave readings from *The Pickwick Papers* in 1859 and *A Personal History of David Copperfield* in 1861, staying next door at The Angel Hotel.

Today, this impressive Georgian gem on Angel Hill is without doubt one of the most unique and atmospheric venues in Bury St Edmunds and a grand backdrop for weddings, private parties, conferences, corporate events and TV and film locations. Designed for entertainment, The Athenaeum can be hired exclusively for up to 350 guests using all five spaces, allowing guests to seamlessly move from arrival reception to dinner, just as the Georgians would have done at their high society balls.

### **Key Features**

- Ideal town centre location near the beautiful award-winning Abbey Gardens.
- Excellent bus and train transport links.
- Pay and display car park directly outside of The Athenaeum .
- Five flexible spaces available for hire.
- Professional, attentive and friendly event management team.
- Delicious in-house catering by Seasoned.
- Fabulous choice of leading local accredited suppliers.

### **Capacities**

- Dinners 152
- Drinks Receptions 250
- Conferences 200
- Exhibitions 200



“Experience is  
one thing you  
can’t get for  
nothing.”

- Oscar Wilde -



# Corporate Events

**Iconic venue for conferences, awards ceremonies and gala dinners.**



**Built to entertain, The Athenaeum has been hosting impressive and memorable events for over 150 years and today, guests can now enjoy its rich heritage and atmosphere for business events.**

With a stunning Georgian interior and light and airy rooms, The Athenaeum is the perfect business venue. Our five flexible event spaces are available for daytime and evening events and can be hired independently or exclusively from 10 to 200 guests. These flexible inter-connecting rooms make The Athenaeum an ideal venue for exhibitions and networking.

Contact our team today on 01284 758380 or email [enquiries@the-athenaeum.com](mailto:enquiries@the-athenaeum.com).





“The only thing to do with good advice is to pass it on. It is never of any use to oneself.”

- Oscar Wilde -

THE ATHENÆUM

BURY ST EDMUNDS

# Private Events

**Entertaining Bury St Edmunds society  
for over 150 years.**



**Not only is The Athenaeum one of Bury St Edmunds' most elegant and atmospheric venues, it has a rich literary heritage involving Charles Dickens, Oscar Wilde, Charles Kingsley and William Thackeray.**

Designed for entertainment, the Georgian interiors, majestic ceilings, ornate chandeliers and flexible inter-linking rooms make The Athenaeum the perfect venue for private parties and special celebrations.

There is ample space at The Athenaeum to eat, drink, dance and gamble. We have a fabulous collection of accredited suppliers to add the finishing touches to your party from décor and flowers to live bands and casino tables; we can work closely with you to ensure your event is a memorable and enjoyable experience.

Contact our team today on 01284 758380 or email [enquiries@the-athenaeum.com](mailto:enquiries@the-athenaeum.com).







“Live! Live the wonderful life that is in you!  
Let nothing be lost upon you. Be always  
searching for new sensations.  
Be afraid of nothing.”

- Oscar Wilde -

THE ATHENÆUM  
BURY ST EDMUNDS

# Celebration of Life



**Peaceful, private and reflective.**

If you are looking for a serene and tranquil setting to celebrate the life of your loved one, look no further than The Athenaeum.

Our beautiful Georgian building, near to Abbey Gardens and Bury town centre is a wonderful setting to spend time with your family and friends.

Planning a wake or celebrating the life of a loved one is an emotional occasion, but that doesn't mean that it can't be a beautiful and uplifting experience. People choose The Athenaeum not only because of its Georgian charm and elegance but also because of our dedicated and attentive team. Our team will work closely with you to ensure that your every wish is detailed and delivered so that family and friends can say their goodbyes peacefully and privately.

A celebration of life is a special time of fond remembrance and our team will help plan every detail of your remembrance from the flowers to the food and drink and we will always be on hand to ensure every detail runs smoothly on the day. Whether your gathering is large or small, we can provide a fabulous range of seasonal menus from hot and cold buffets, formal dining, open bar or just simple refreshments. We will take care of everything for you, to make a difficult time as stress free as possible.

Contact our team today on 01284 758380 or email [enquiries@the-athenaeum.com](mailto:enquiries@the-athenaeum.com).





“Life is made of ever so many partings welded together.”

- Charles Dickens -

THE ATHENÆUM  
BURY ST EDMUNDS

# Weddings

**Historic, elegant and romantic.**



**The Grade I listed Georgian Athenaeum was originally designed for entertaining and is the perfect wedding venue in the heart of beautiful Bury St Edmunds.**

Today, The Athenaeum can still be used for its original purpose and is a spectacular wedding setting bursting with Georgian elegance and grandeur. The impressive Georgian Ballroom provides the perfect backdrop for a stunning wedding for 60 to 180 guests with a wonderful sweeping staircase for that unmissable fairy tale entrance. Alternatively, the inter-connecting Lounge and The Reading field Room on the first floor of The Athenaeum are full of character and charm, overlooking Bury's Georgian square, and make the perfect setting for smaller, more intimate receptions from as few as 10 people.

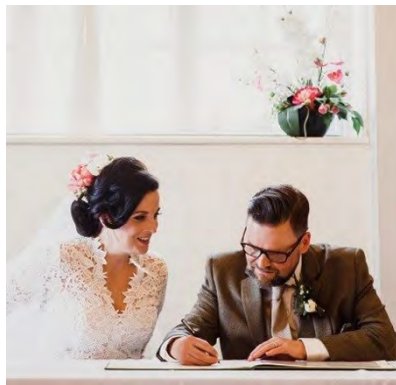
Both The Old Library and The Billiards Room on the ground floor of The Athenaeum are used officially by the Suffolk Registration Service for ceremonies, making it ideal for couples who want to hold their ceremony, wedding breakfast and reception all under one roof. All of our rooms can be hired individually or in combination allowing optimum flexibility for every couple for ceremony only, reception only or both together.

Furthermore, The Athenaeum is conveniently situated on Angel Hill and a very short stroll to the award-winning Abbey Gardens, which provide a stunning backdrop for unforgettable wedding photography. During the warmer months we are also able to offer reception drinks and canapes in the Water Garden before making your way over to The Athenaeum for your wedding breakfast.

Last but not least; The Athenaeum has a talented team who will personally help you create your dream wedding day. From accommodating specific requests to just making sure the day runs smoothly and without a hitch, the team at The Athenaeum will always be on hand, going above and beyond, to make sure you feel completely at ease and enjoy your special day.

**Contact our team today on 01284 758380 or email [enquiries@the-athenaeum.com](mailto:enquiries@the-athenaeum.com).**





“Happiness is a gift and the trick is not to expect it, but to delight in it when it comes.”

- Charles Dickens -

# THE ATHENÆUM

BURY ST EDMUNDS

# Christmas Parties

**A fabulously entertaining venue for  
fun-filled Christmas frolics.**



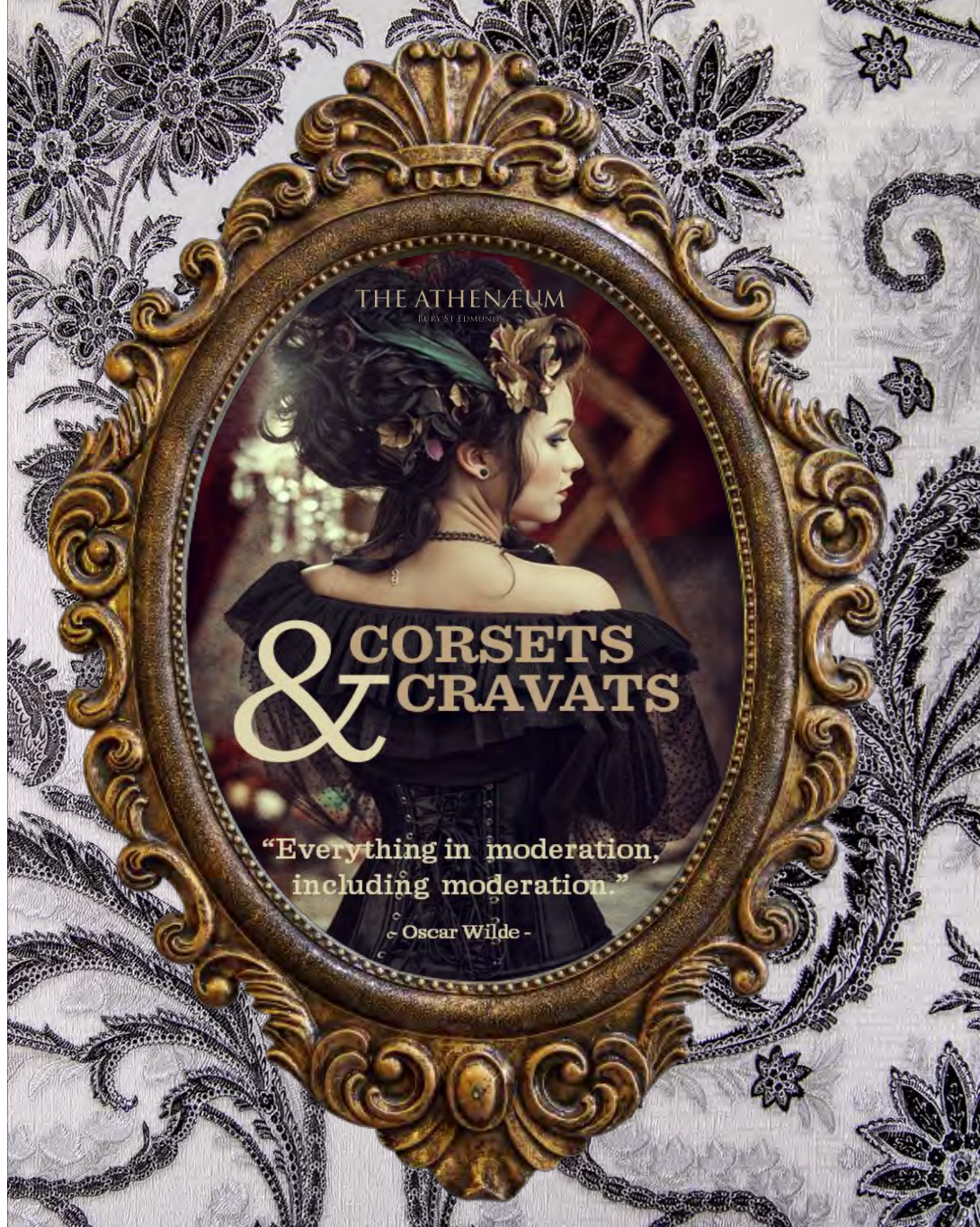
**The Athenaeum is a fabulous venue for spectacular festive  
celebrations in the heart of Bury town centre.**

If you're looking for an exclusive fun-filled Christmas party, The Athenaeum is without doubt one of the most unique and atmospheric venues in town, with delicious food and drink and exciting packages to ensure your office Christmas party is unforgettable. With views over Bury's Georgian square, The Athenaeum is steeped in history and is a truly magical setting that will delight and fascinate your guests.

So forget the ghost of Christmas parties past, our chic and glamorous parties are a little more on the Wilde side. Christmas at The Athenaeum should definitely feature on your festive calendar in 2023!

Contact our team today on 01284 758380 or email [enquiries@the-athenaeum.com](mailto:enquiries@the-athenaeum.com).





THE ATHENÆUM

BURY ST EDMUNDS

# & CORSETS & CRAVATS

“Everything in moderation,  
including moderation.”

- Oscar Wilde -

“Forget the ghost of Christmas parties past,  
our chic and glamorous parties are a little  
more on the Wilde side.”

- Corsets & Cravats, Christmas 2023 -

# THE ATHENÆUM

BURY ST EDMUNDS

# The Ballroom

**Built to entertain, literally.**



For over 150 years, The Athenaeum's impressive Ballroom has hosted lavish receptions, theatrical readings, heart-rending concerts and unforgettable parties and celebrations.

## Capacity

250 for a standing reception  
152 for a lunch or dinner  
136 for a dinner dance  
104 for awards, dinner and dance  
180 for theatre-style  
150 for cabaret-style  
80 for classroom-style  
60 for boardroom-style  
50 for u-shape style

## The Space

Specifically created for entertaining in 1864, the grandiose Georgian Ballroom remains as elegant as ever. The Ballroom can host large cocktail receptions, fashion shows, awards ceremonies, fundraising dinners and wedding receptions. The light and airy Ballroom, with its gentle pastel interiors boasts six elaborate crystal chandeliers, magnificent pillars, beautiful entry hall and a balcony stairwell for guests to make a dramatic entrance.

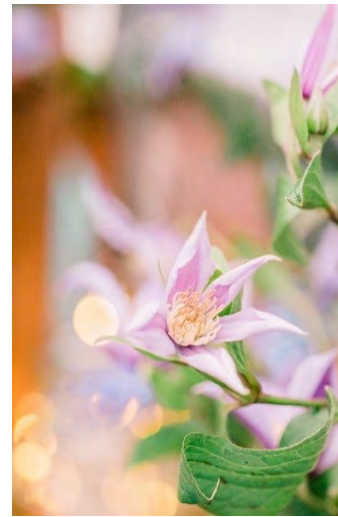
## The Facilities

Easily accessible toilets and cloakroom.  
Located on the ground floor with disabled access, lift access and hearing loops available.  
Low level staging and standard AV equipment available for hire.  
A full sound system and technical support is available upon request.  
Screen, projector, Wi-Fi access, flipcharts and delegate stationery included within DDR.  
In-house catering provided by Seasoned.

Contact our team today on 01284 758380 or email [enquiries@the-athenaeum.com](mailto:enquiries@the-athenaeum.com).







“After a good dinner one can forgive anybody, even one’s own relatives.”

- Oscar Wilde, A Woman of No Importance, 1893 -

# THE ATHENÆUM

BURY ST EDMUNDS

# The Lounge

**Exclusive and entertaining events.**



**The Lounge is perfect for daytime meetings, presentations, training courses and private dining.**

## **Capacity**

60 for standing reception  
56 for seated lunch or dinner  
70 for theatre-style  
48 for cabaret-style  
30 for classroom-style  
36 for boardroom-style  
30 for u-shape style

## **The Space**

The Lounge is a light and airy space with views over Bury's Georgian square and is perfect for daytime meetings, presentations, training courses and private dining. Offering natural daylight and complimentary Wi-Fi it is situated on the first floor and connects to The Reading Room. Available for both daytime and evening hire, we offer both Room Hire packages and Day Delegate packages to suit all manner of budgets and needs.

## **The Facilities**

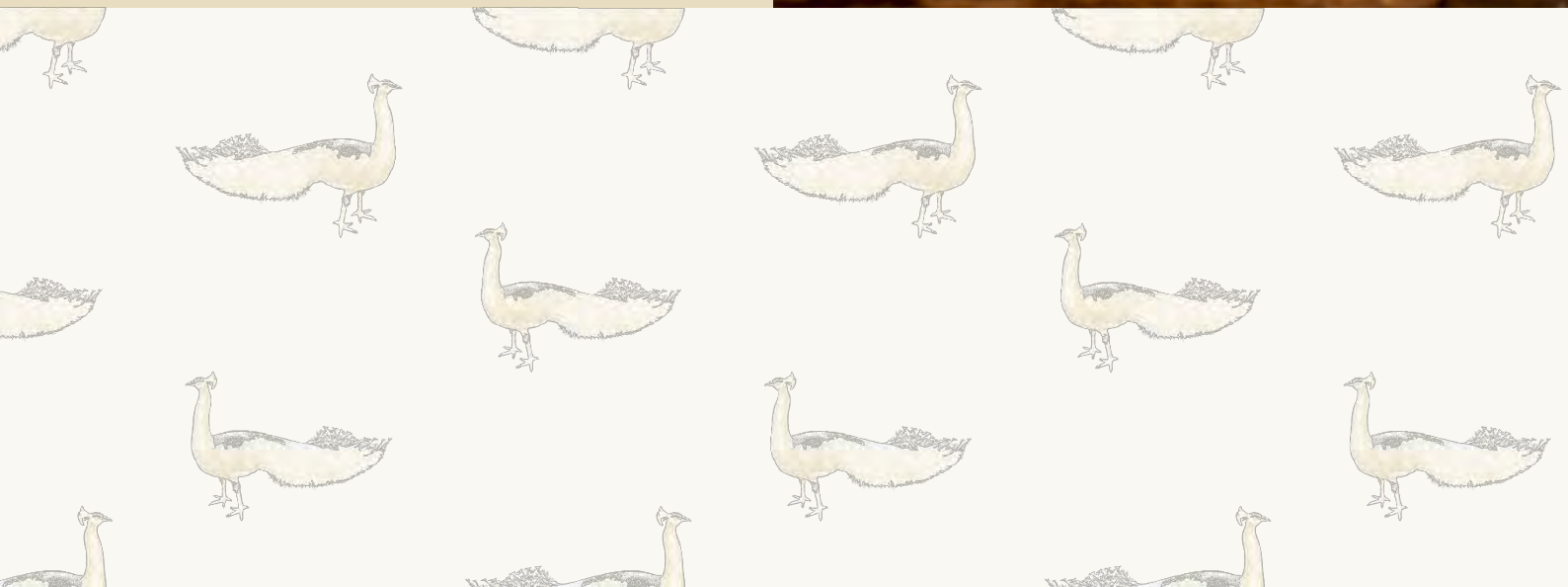
Easily accessible toilets and cloakroom.  
Located on the first floor with disabled access, lift access and hearing loops available.  
Screen, projector, Wi-Fi access, flipcharts and delegate stationery included within DDR.  
Built-in bar counter.  
In-house catering provided by Seasoned.

**Contact our team today on 01284 758380 or email [enquiries@the-athenaeum.com](mailto:enquiries@the-athenaeum.com).**



“If you ever did,  
you will agree with  
me that it requires  
a pretty strong head  
to go out to dinner  
and supper  
afterwards.”

- Charles Dickens,  
The Pickwick Papers, 1836 -



# The Reading Room

**An intimate space for smaller  
personal celebrations.**



**The Reading Room is a beautiful meeting space with a balcony overlooking Angel Hill and the entrance to Abbey Gardens.**

## Capacity

40 for standing reception  
48 for seated lunch or dinner  
50 for theatre-style  
40 for cabaret-style  
24 for classroom-style  
36 for boardroom-style  
26 for u-shape style

## The Space

The Reading Room is full of charm with glorious views over Angel Hill. Located on the first floor of The Athenaeum, it is interlinked with The Lounge and can be used as a breakout room or meeting room. This bright and airy space is available for both daytime and evening hire and we can take care of everything from timings and set-up requirements to menus and special diets.

## The Facilities

Easily accessible toilets and cloakroom.

Located on the first floor with disabled access, lift access and hearing loops available. Access to balcony overlooking Bury's Georgian square and the Abbey Gardens entrance. Screen, projector, Wi-Fi access, flipcharts and delegate stationery included within DDR. In-house catering provided by Seasoned.

Contact our team today on 01284 758380 or email [enquiries@the-athenaeum.com](mailto:enquiries@the-athenaeum.com).





“If you ever did, you will agree with me that it requires a pretty strong head to go out to dinner and supper afterwards.”

- Charles Dickens, *The Pickwick Papers*, 1836 -

# THE ATHENÆUM

BURY ST EDMUNDS

# The Billiards Room

**Playful and beautiful wedding ceremonies and events.**



The Billiards Room has a simple effortless elegance with its pillars, chandeliers and timeless classic checkerboard floor.

## Capacity

50 for standing reception  
32 for a seated lunch or dinner  
50 for theatre-style  
16 for cabaret-style  
15 for classroom-style  
16 for boardroom-style  
14 for u-shape style

## The Space

The Billiards Room can be hired exclusively or together with the adjacent Old Library. Located on the ground floor of The Athenaeum, The Billiards Room is very welcoming with a spacious interior that is particularly light and airy. Both rooms are licenced for civil ceremonies and partnerships so couples can get married before ambling over to the beautiful Abbey Gardens for their wedding photos and then sauntering back to The Athenaeum for a fabulous wedding feast.

## The Facilities

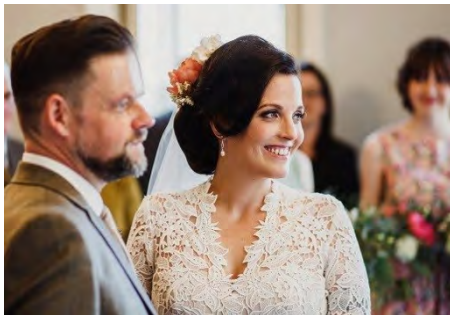
Easily accessible toilets and cloakroom.  
Located on the ground floor with disabled access and hearing loops available.  
Screen, projector, Wi-Fi access, flipcharts and delegate stationery included within DDR.  
In-house catering provided by Seasoned.

Contact our team today on 01284 758380 or email [enquiries@the-athenaeum.com](mailto:enquiries@the-athenaeum.com).



“I have the simplest  
tastes. I am always  
satisfied with  
the best.”

- Oscar Wilde -



# The Old Library

**Beautiful and atmospheric wedding ceremonies and events.**



**The Old library is a beautifully versatile space bathed in natural light.**

## **Capacity**

50 for standing reception  
32 for a seated lunch or dinner  
50 for theatre-style  
16 for cabaret-style  
15 for classroom-style  
16 for boardroom-style  
14 for u-shape style

## **The Space**

The Old Library can be hired exclusively or together with the adjacent Billiards Room. Located on the ground floor of The Athenaeum, The Old Library is spacious, light and airy and licenced for civil ceremonies and partnerships so couples can host their ceremony and reception all under one roof.

During the Summer we are even able to offer guests reception drinks and canapes in the Water Garden of the award-winning Abbey Gardens before returning to The Athenaeum for a wonderfully seasonal wedding breakfast.

## **The Facilities**

Easily accessible toilets and cloakroom.

Located on the ground floor with disabled access and hearing loops available.

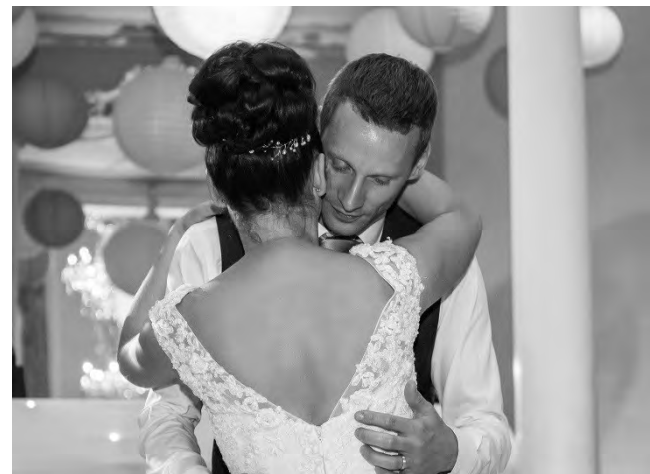
Screen, projector, Wi-Fi access, flipcharts and delegate stationery included within DDR.

In-house catering provided by Seasoned.

Contact our team today on 01284 758380 or email [enquiries@the-athenaeum.com](mailto:enquiries@the-athenaeum.com).







“I was not merely over head and ears in love with her, but I was saturated through and through.”

- Charles Dickens, David Copperfield, 1849 -

THE ATHENÆUM  
BURY ST EDMUNDS

# Green Room Bar

**A delightful little bar adjoining  
The Ballroom.**



**Our well-stocked bar serves fine wines, local beers and lagers,  
champagne, spirits and soft drinks.**

Our ground floor bar opens for events alongside our first floor bar in The Lounge, to ensure your service is as friendly and speedy as possible.

Contact our team today on 01284 758380 or email [enquiries@the-athenaeum.com](mailto:enquiries@the-athenaeum.com).





“Never lose a chance of saying a kind word...  
An acorn costs nothing; but it may sprout into a  
prodigious bit of timber.”

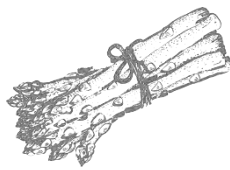
- William Makepeace Thackeray, Vanity Fair, 1847 -

# THE ATHENÆUM

BURY ST EDMUNDS

# Food & Drink

**Providing high quality, imaginative,  
seasonal and sustainable event menus.**



**We have an amazing team of talented, fun and motivated people whose sole focus is on creating extraordinary smile-inducing food and drink experiences at The Athenaeum.**

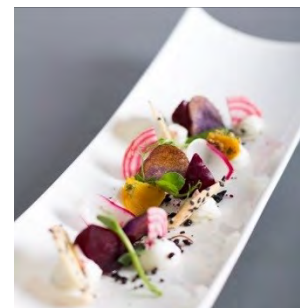
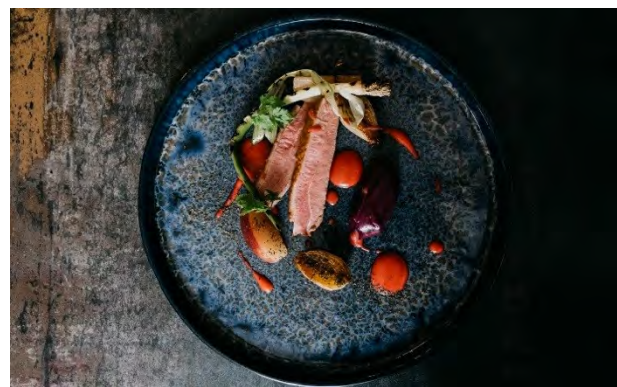
Looking to celebrate in magnificent surroundings with delicious, imaginative food and friendly service? Whether you're planning a special birthday celebration with family and friends or a spectacular gala dinner, look no further than The Athenaeum. This prestigious Georgian gem has over 150 years of entertaining guests with fabulous food and drink and our on-site team will ensure you celebrate in style.

So, whether you're hosting a fundraising dinner, product launch, awards dinner, cocktail party or Christmas party, we'll make the whole experience effortless and enjoyable. From event styling to bespoke menus and cocktails, we always ensure that your event is unique and lives up to the occasion.

Our friendly events and culinary team can give you advice on what to serve and will work with you to tailor your menu requirements to your guests. Whatever the occasion, no brief is ever too big or small for our trusted team and we'll work with you to create something unforgettable.

Contact our team today on 01284 758380 or email [enquiries@the-athenaeum.com](mailto:enquiries@the-athenaeum.com).





“...as any one who knows me intimately will tell you, I refuse everything except food and drink. At the present moment I am eating muffins because I am unhappy. Besides, I am particularly fond of muffins.”

- Oscar Wilde -

# THE ATHENÆUM

BURY ST EDMUNDS

