

THE APEX

CORPORATE &  
PRIVATE EVENTS

BURY ST EDMUNDS



## INTRODUCTION

Located in the civic heart of Bury St Edmunds, The Apex is a 500-seater award-winning live music, events, entertainment, business and community venue on the site of the old Cattle Market.

Renowned for its architectural beauty and acoustics, the venue is widely regarded as a cultural magnet for the Arc development and surrounding community and has a range of spaces that can be hired for your event. Our flexible spaces can be hired for conferences, AGMs, exhibitions, photoshoots, product launches, meetings, fashion shows, receptions and weddings.

When the venue is not hosting world-class artists, our high-tech auditorium, lounge and three studio spaces are all available to hire for a variety of corporate, private and community events, offering local residents and visitors from further afield to experience this exciting venue.

So, whether you book your dinner, conference, meeting, party or wedding with us, guests will experience a wonderfully creative and artistic environment in one of Bury's most vibrant cultural venues. With our award-winning architecture, central location and flexible event spaces ranging in capacity from 10 to 520, The Apex is a fabulous setting for exceptional events, not to mention our fabulously delicious food and drink experiences from leading venue and event caterer, Seasoned.



## MEETINGS AND EVENTS

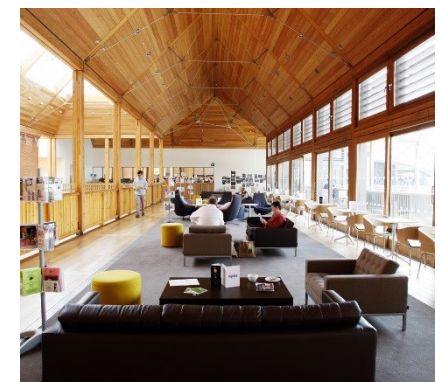
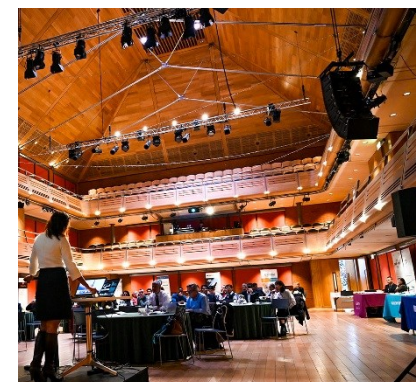
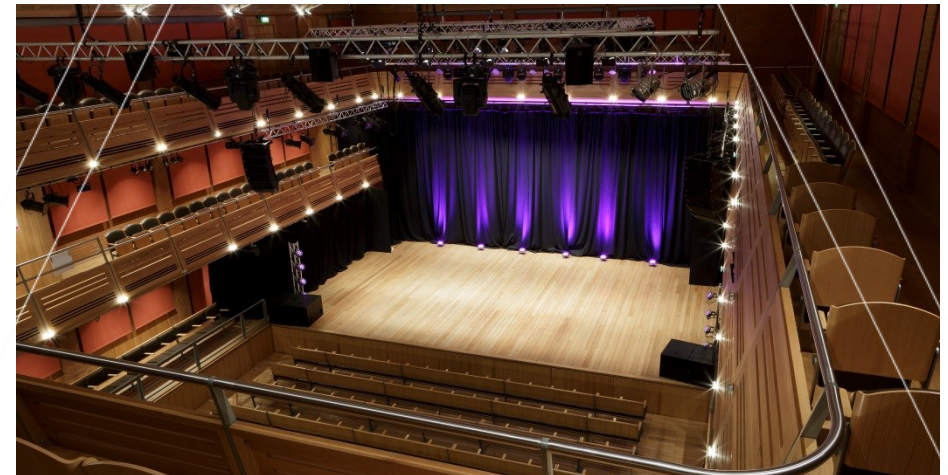
An award-winning meeting and conference venue in the heart of Bury St Edmunds. The Apex is a contemporary and flexible event venue for between 10 and 600 delegates.

The high-tech Auditorium offers some of the best facilities in the region, with sound and lighting options far outweighing its competitors. Its flexible layout means it can seat 530 delegates in a formal, tiered theatre or 260 delegates in a cabaret configuration on the flat floor.

The first floor Lounge is a bright and airy space with an internal balcony overlooking the ground floor foyer and an external balcony for those long, hot, summer evenings. It offers the perfect space for receptions, parties and exhibitions and it regularly plays host to a variety of business networking events.

In addition, there are three studio rooms on the first floor for between 30 and 80 delegates which include all standard audio-visual equipment plus technical support if required.

To make an enquiry, please call 01284 758390 or email us on [enquiries@the-athenaeum.com](mailto:enquiries@the-athenaeum.com)





## WEDDING RECEPTIONS

If a historic palace or stately home isn't quite for you, then The Apex is a wonderful contemporary wedding venue and beautiful blank canvas for civil ceremonies, wedding breakfasts and receptions.

This stunning RIBA award-winning venue, located in the heart of beautiful Bury St Edmunds, has won a string of architecture accolades for its modern timber design and unrivalled acoustical excellence. The venue spaces feature stylish clean lines, gorgeous vaulted wooden ceilings, cool exposed brickwork and plenty of natural daylight so your guests will still experience the same wow factor and elegance for your wedding day. So, take centre stage and celebrate the most important day of your lives in our award-winning state of the art venue that has played host to leading artists and musicians from around the world.

The Apex is the perfect place to host an intimate gathering with your nearest and dearest, or a lavish celebration with all of your family and friends for up to 260 guests. The venue will be exclusively yours for the day, so you can relax and celebrate in peace, uninterrupted by the hustle and bustle of everyday life. There are two main wedding spaces: the unrivalled Auditorium is a celebration of white oak and red brick and is truly awe-inspiring as an events space. The wonderful oak roof and natural daylight of the first floor Lounge are also a wonderful backdrop for a more intimate celebration.





(continued)

Both spaces have their own bars for guests to enjoy and our on-site caterer, Seasoned, are renowned for their imaginative, seasonal and sustainable menus.

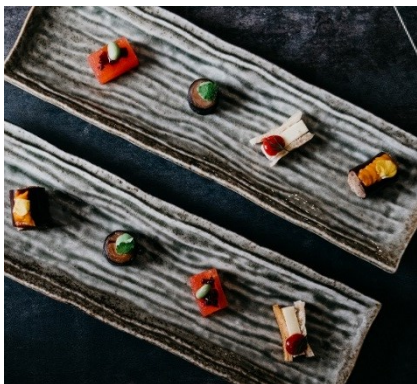
Seasoned's wedding packages are extensive and they would be thrilled to personally create a more tailored wedding day experience for you and your guests so that your big day is as individual as you are.

Your dedicated wedding planner will help and advise you on all aspects of the day, from ensuring your arrival runs smoothly through to the food, drink, cake, flowers, theming and photography. Whichever package you choose, both of our wedding spaces ooze character and offer couples the freedom to decorate as they wish, so The Apex is the perfect place to say 'I do'.

To make an enquiry, please call 01284 758390 or email us on [enquiries@the-athenaeum.com](mailto:enquiries@the-athenaeum.com)







## CHRISTMAS PARTIES

Celebrate your corporate Christmas party in style at The Apex. Each December The Apex is transformed into a spectacular venue for Christmas party celebrations. We know what makes a great party; great food, drink and service, great entertainment, great times and great memories.

So, if you're looking for an exclusive fun-filled Christmas party in the heart of Bury St Edmunds, look no further. The Apex is without doubt one of the most unique and atmospheric party venues in town with delicious food and drink and exciting packages to ensure there will be no other corporate Christmas party quite like yours.

To make an enquiry, please call 01284 758390 or email us on [enquiries@the-athenaeum.com](mailto:enquiries@the-athenaeum.com)



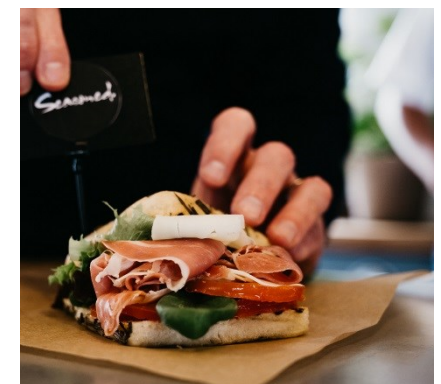
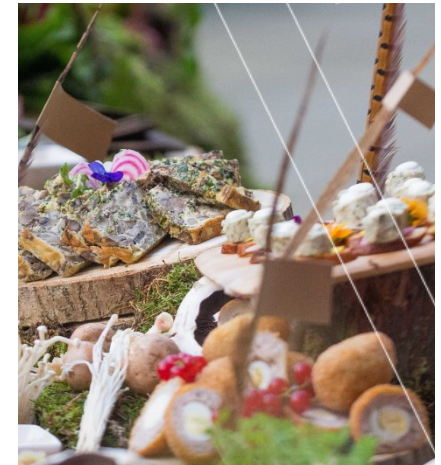
## FOOD AND DRINK

As an award-winning creative and cultural arts venue in the region, The Apex is synonymous with providing inspiring and enriching experiences that bring everyone together. Venue and event caterers, Seasoned, brings the same dedication to all the food and drink experiences staged at The Apex.

Our team always aim to give our clients and customers 100% confidence in the food and event experiences that we create by openly demonstrating how we grow, source, produce, craft, operate, manage and deliver them. Our chefs have a great love affair with local seasonal produce and are passionate about our sustainable farm to fork approach. They are proud to work with a diverse range of great British suppliers, farms and produce and always work very hard to identify quality, local suppliers and buy locally and seasonally wherever possible.

Our on-site culinary team are experts at ensuring your event runs seamlessly whilst treating you and your guests to high quality food and service with delicious, ethically sourced, seasonal menus all made fresh from scratch from our on-site kitchen.

To make an enquiry, please call 01284 758390 or email us on [enquiries@the-athenaeum.com](mailto:enquiries@the-athenaeum.com)





## The Auditorium

The award-winning auditorium has played host to a diverse programme of live music and events; from classical concerts to pop, rock, jazz, blues, world, country and folk, plus comedy and dance performances. The comfort and outstanding acoustics have been applauded by artists as diverse as Julian Lloyd Webber, the European Union Chamber Orchestra, the Brodsky String Quartet and Rockers. It was once described by Fairport Convention as the *“best acoustic we’ve had in 40 years of touring.”* Its dynamic and innovative seating and flooring can be configured in a variety of ways to suit any layout so it is perfect for conferences, exhibitions, lectures, dinner dances and awards ceremonies. The Auditorium at The Apex is a truly unique events space in the region.

## The Lounge

The first floor Lounge is a bright and airy space with an internal balcony overlooking the ground floor foyer and an external balcony to enjoy during warmer months. The space regularly hosts a variety of business, community and networking events and is perfect for large receptions and exhibitions. Alongside this, our comfortable café bar area can also be hired and provides an ideal space for additional break-out facilities, parties and informal meetings.

## Studio 1

This light and airy space is situated on the first floor of The Apex and it is suitable for smaller meetings, training, presentations, rehearsals and breakout areas with a full AV system in place.

## Capacities

350 for a standing reception  
250 for a lunch or dinner  
230 for a dinner dance  
230 for awards, dinner and dance  
500 for theatre-style  
200 for cabaret-style  
132 for classroom-style  
28 stands for an exhibition



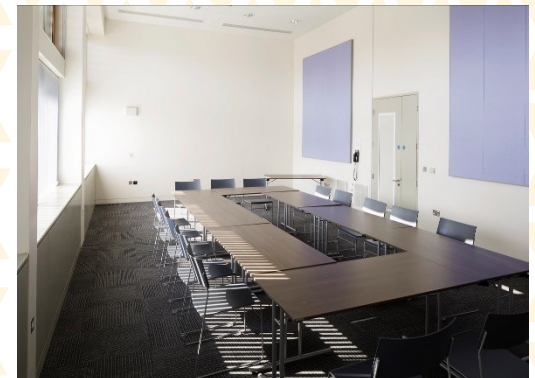
## Capacities

300 for theatre-style



## Capacities

50 for theatre-style  
24 for cabaret-style  
24 for classroom-style  
28 for boardroom-style  
21 for U-shape-style





## Studio 2

Located on the first floor, this space is perfect for meetings, conferences, presentations, workshops and breakout areas with a ceiling projector, screen and built-in sound system.

## Studio 2a & 2b

Studio 2 can be divided into two smaller meeting rooms or breakout areas if needed.

## Capacities

80 for theatre-style  
48 for cabaret-style  
30 for classroom-style  
38 for boardroom-style  
35 for U-shape-style



## Capacities

40 for theatre-style  
16 for cabaret-style  
12 for classroom-style  
18 for boardroom-style  
15 for U-shape-style





## HOW TO GET HERE

### **The Apex, 1 Charter Square, Bury St Edmunds, Suffolk IP33 3FD**

#### **By car**

(directions from the A14)

For SatNavs, please use IP33 3DG (Arc/Cattlemarket car park, 2 minutes walk, short stay or longer stay after 6pm) or IP33 3BA (Parkway car parks, 4 minutes walk, short stay and medium/long stay).

Leave the A14 at Junction 43 and at the roundabout take the 3rd exit onto the A1302 (Compeigne Way). At the mini roundabout take the 2nd exit onto Tayfen Road.

At the next mini roundabout take the 2nd exit to continue on Tayfen Road. At the next mini roundabout, once again take the 2nd exit on Tayfen Road into Parkway over pedestrian crossing, the fire station is on your right. At the next roundabout, take the 2nd exit (straight on).

For the Arc/Cattlemarket car park, turn left into the car park.

For the Parkway car park, continue to the next mini-roundabout, and take the 4th exit, going back down Parkway. After the pedestrian crossing, turn left into the car park.

#### **Parking**

The nearest car park is the Arc/Cattlemarket car park (2 minutes walk) - IP33 3DG. This car park includes an underground section with direct access to the front of The Apex, via stairs or lift.

For longer stays, the nearest car park is the Parkway multi-storey car park (4 minutes walk) - IP33 3BA and Ram Meadow car park (9 minutes away) - IP33 1XP.

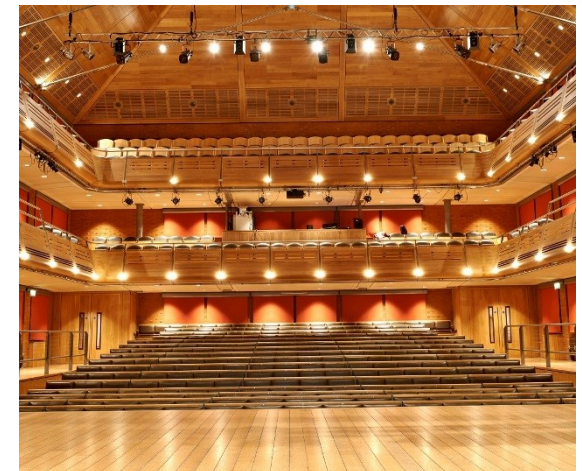
For details of more car parks visit Bury St Edmunds car parks.

#### **By train**

Bury St Edmunds train station is situated on Station Hill, a 10 minute walk to The Apex. Trains arrive from all major towns in East Anglia and beyond.

#### **By bus**

The Apex is situated in the arc shopping centre, just two minutes walk from the main bus station which is situated on St Andrews Street North. Buses arrive at this station from local and National Express services. Most bus routes include a stop at the arc.





THE APEX

*Seasoned.*

1 Charter Square St, Bury Saint Edmunds IP33 3FD  
enquiries@the-athenaeum.com  
www.theapex.co.uk  
www.the-athenaeum.com  
01284 758390